

Alaska Department of Fish and Game

Habitat Section
Southeast Region



114-23-10700-2005 Tributary 2

ADDITION

Water body name:

Survey date: 6/29/2024

Quad: Juneau A-6

Species & Lifestage:

Upper Reach Latitude: 58.143184 **Longitude:** -135.897075

Survey crew: CD, DK

Lower Reach Latitude: 58.143881 **Longitude:** -135.897447

Findings: We surveyed this uncataloged stream using baited minnow traps and GPS and captured juvenile coho salmon. This slow-moving stream is primarily composed of fine organic substrate upstream of the road crossing, transitioning to gravel and larger cobble downstream. The culvert does not hinder fish passage but is undersized and not set deep enough. Future investigation upstream is warranted. (Table 1; Figures 1–3)

Recommendations: Add this stream into the anadromous waters catalog for rearing coho salmon. (Figure 4).

Nomination: Pending

Table 1.–114-23-10700-2005 Tributary 2 survey data.

Waypoint	Latitude	Longitude	Notes	Stream Width ft	Stream Substrate	Habitat Features	Gradient %	Sample Effort	Sample Results
477	58.143170	-135.897093		8-10	Fine Organic		0-1	MT	2 CO
478	58.143469	-135.897620	24 inch CMP set on top of channel. appears passable but undersized and poorly set	8-10	Small Gravel		0-1	Not Fished	



Figure 1.—Juvenile coho salmon captured at waypoint 477.



Figure 2.—Channel at waypoint 477.



Figure 3.—Outlet of culvert at waypoint 478.

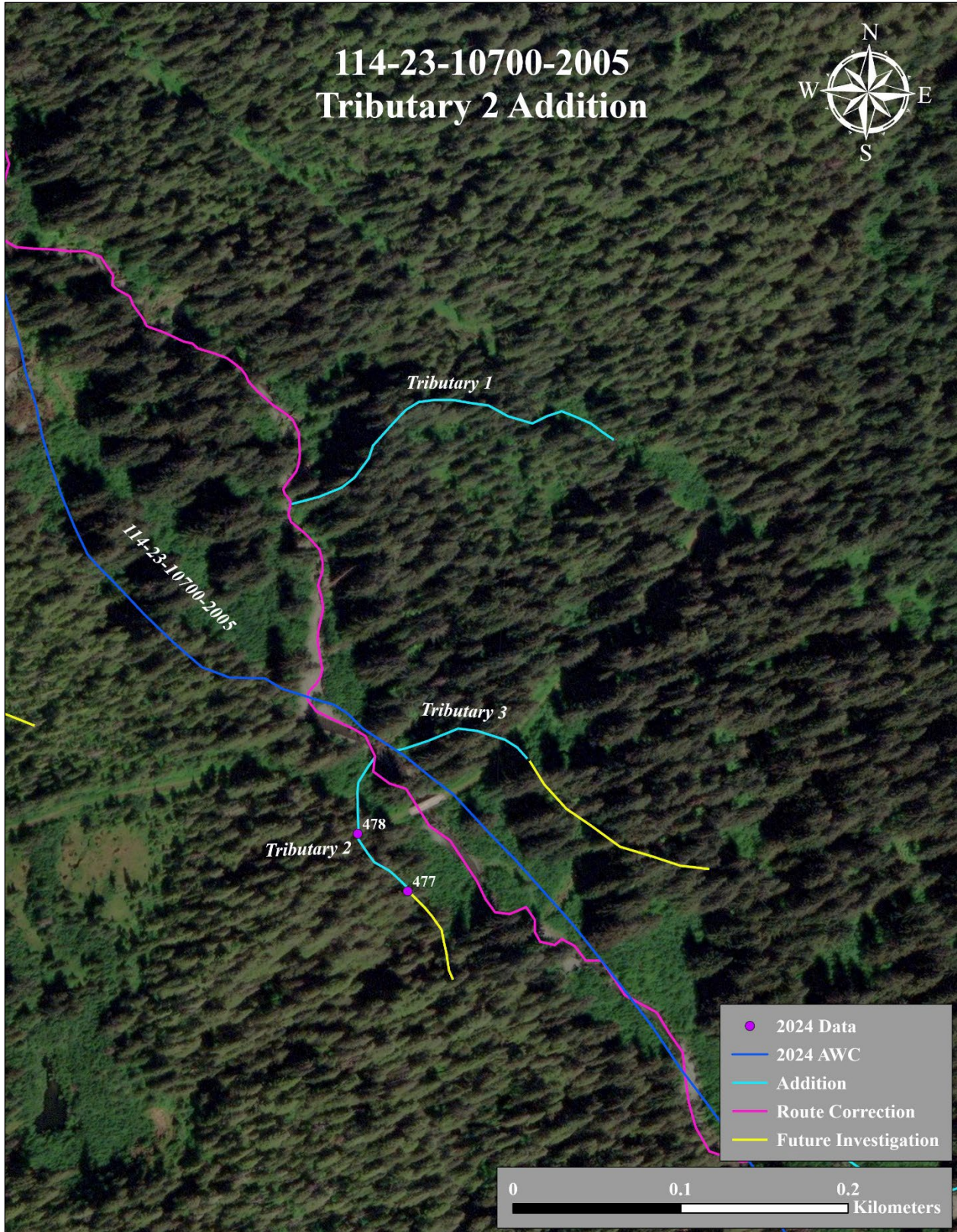


Figure 4.—Stream No. 114-23-10700-2005 Tributary 2 addition.